

# MODEL 128

## Heat Seal Machines



**PUT IT ON!**



# FOR USE BY QUALIFIED SERVICE PERSONNEL ONLY

## Congratulations!

Your selection of the Insta Graphic Systems (IGS) heat seal machine is a sound business decision. IGS equipment is the result of the highest quality engineering and time-tested design. Your new machine combined with IGS's reputation of innovation in the heat-sealing field, insures the continuing capability of delivering the best-decorated substrates possible.

This manual describes installation, operation, and maintenance procedures for your new model 128 machine, as well as easy to use instructions for on-the-spot maintenance.

Your model 128 machine will have a long trouble-free life. Read this manual. Keep it with your machine; it's your key to proper operation and lasting service.

## Installation



### DOMESTIC

Use a **separate** 15 amp AC circuit. Only industrial extension cords with proper wire size should be used: size 16/3 wire for distances up to 25 feet, and size 14/3 for distances up to 50 feet.



### INTERNATIONAL

Use a **designated** 16 amp AC circuit. Only industrial extension cords with proper wire size (2.5 sq. mm) shall be used.

## Limited Machine Warranty

Insta Graphic Systems (IGS) warrants this heat seal machine, when operated under normal conditions, to be free from manufacturing defects in material and workmanship for a period of one year on parts (lifetime on the upper heating element) and 90 days on labor from the invoice date.

This warranty will be effective only when IGS authorizes the original purchaser to return the product to the factory in Cerritos, California freight prepaid, and only when the product upon examination has proven to be defective.

This warranty does not apply to any machine that has been subjected to misuse, negligence or accident.

IGS shall not be liable for the injury, loss or damage, direct or consequential, arising out of the use or the inability to use the product.

No claim of any kind shall be greater in amount than the sale price of the product or part to which claim is made.

*This is the sole warranty given by the company, it is in lieu of any other warranties, expressed or implied, in law or in fact, including the warranties of merchantability and fitness for a particular use, and is accepted as such by the purchaser in taking delivery of this product.*

## Specifications

Voltage **115/120 Volts AC** 50/60 Hertz  
Model 128 1750 Watts 14.6 Amps

Voltage **230/240 Volts AC** 50/60 Hertz  
Model 128 2200 Watts 9.6 Amps

Weight Model 128 98 Pounds (44.5 KG)

## Safety Summary



### WARNING

In case of power cord damage, do not attempt to repair or replace the power cord. Contact the manufacturer or the local distributor.



### WARNING

Avoid touching hot surfaces while operating the machine.



### CAUTION

During normal operation, the base of the machine must be installed or placed above the wall socket.



### CAUTION

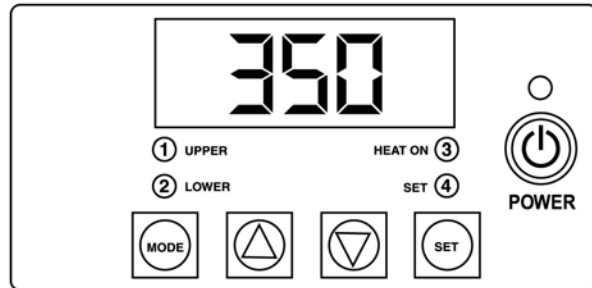
When servicing or cleaning the machine, make sure that the power cord is removed from the wall socket.

# FOR USE BY QUALIFIED SERVICE PERSONNEL ONLY

## Operation

1. It is recommended that you review the "How to Apply Instructions" (in our Product Information Sheet) before beginning heat sealing operations.
2. Turn the power on by pressing the **POWER** button on the controller.
3. Set the desired temperature and time.
4. Lift handle so that the upper platen is away from lower platen.
5. Allow the machine to warm up until the selected temperature is reached.
6. Set the desired pressure by adjusting the pressure adjust wheel located on the channel handle assembly. To reduce pressure, turn wheel to the right (clockwise).
7. Place the substrate on lower platen.
8. Position transfer or lettering on substrate.
9. Close machine by pulling handle down into the closed, operational position.
10. The timer will start automatically and a buzzer will beep at the end of the time cycle.
11. At the end of the operational cycle, lift the handle slowly and move upper platen to its full open position.

## Operation Timer/Temperature Control



## Solid State Controller

This controller has three (3) control features:

1. Temperature - Temperature may be set from 225-450°F (107-232°C).
2. Time - Time may be set from 1 second to 10 minutes.
3. Counter - Cycle counter counts the number of applications from 1 to 9999 (see additional Notes - Counter).

## Controller Operation

1. If the temperature is not being displayed, press the **MODE** button until temperature is displayed.
2. Push and hold **SET** button and simultaneously push UP (↑) or DOWN (↓) arrow buttons to the desired temperature setting.
3. Press the **MODE** button until time is displayed.
4. Push and hold **SET** button and simultaneously push UP (↑) or DOWN (↓) arrow buttons to the desired timer setting.

# FOR USE BY QUALIFIED SERVICE PERSONNEL ONLY

## ADDITIONAL NOTES:

### Temperature



#### NOTE

#### *Fahrenheit/Centigrade (Celsius) Conversion*

*The temperature controller can be programmed to display either °F or °C.*

*To change:*

*Press the **MODE** button until the temperature is displayed, then push and hold the **SET** button for 10 seconds.*

### Timer

- The controller has a count down timer that automatically activates a buzzer at the completion of the application.
- Timer display is minutes:seconds. Range is **00:00** to **10:00**, Colons (:) flash while timer is running.



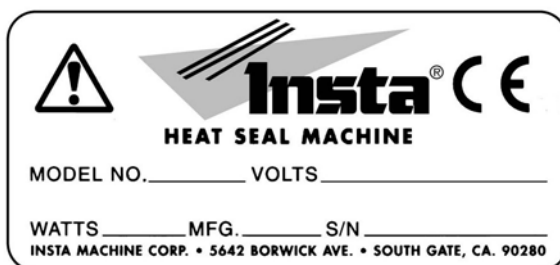
#### NOTE

*The timer or buzzer may be stopped while the handle is in the down position by pressing both the DOWN (↓) arrow button and the UP (↑) arrow button simultaneously. The timer will automatically reset after the handle is raised.*

### Counter

The controller has a built in cycle counter.

- Press **MODE** button until the counter is displayed.
- Counter display range is 0000 to 9999.
- To reset the cycle counter, display the counter reading, then push and hold both UP (↑) and DOWN (↓) arrow buttons for 3 seconds until the counter resets to zero (**0000**) on the display.



# FOR USE BY QUALIFIED SERVICE PERSONNEL ONLY

## International Symbols



Power Off



Power On



Hot Surface



Risk of Electrical Shock



Protective Earth Terminal



Ground



Caution - Warning

## Preventive Maintenance Suggestions

The IGS heat seal machines are relatively maintenance free. For long, trouble-free life, the following preventive maintenance should be followed:

1. Do not heat seal items such as buttons, pins, snaps, or zippers which tend to cut the silicone rubber pad or scratch the Teflon heat platen.
2. Periodically clean the Teflon-coated heat platen with a non-abrasive piece of cloth. Stubborn stains may be cleaned, **when platen is cool**, with mineral spirits.
3. When the heat platen is hot and not in use, keep in open position (away from the silicone rubber pad).
4. To prevent soiling of substrate, periodic wiping of the entire exterior machine, including platens, with a clean rag is recommended. If necessary, use mineral spirits for cleaning a **cold** machine. Since mineral spirits are flammable, use precautions and keep away from sparks, flame, or hot heat platen.
5. Occasionally apply a few drops of light machine oil (such as **3-IN-ONE**) to the moving parts and pressure adjustment screw.

### NOTE

*Wipe off any excess oil.*



# FOR USE BY QUALIFIED SERVICE PERSONNEL ONLY

## Replacement of Silicone Rubber Pads

1. Make sure heat platen is cool.
2. Use a tube of MPPC006 silicone adhesive sealant to bond the silicone rubber pad to the metal platen.

**NOTE:** *Read instructions on the tube package.*

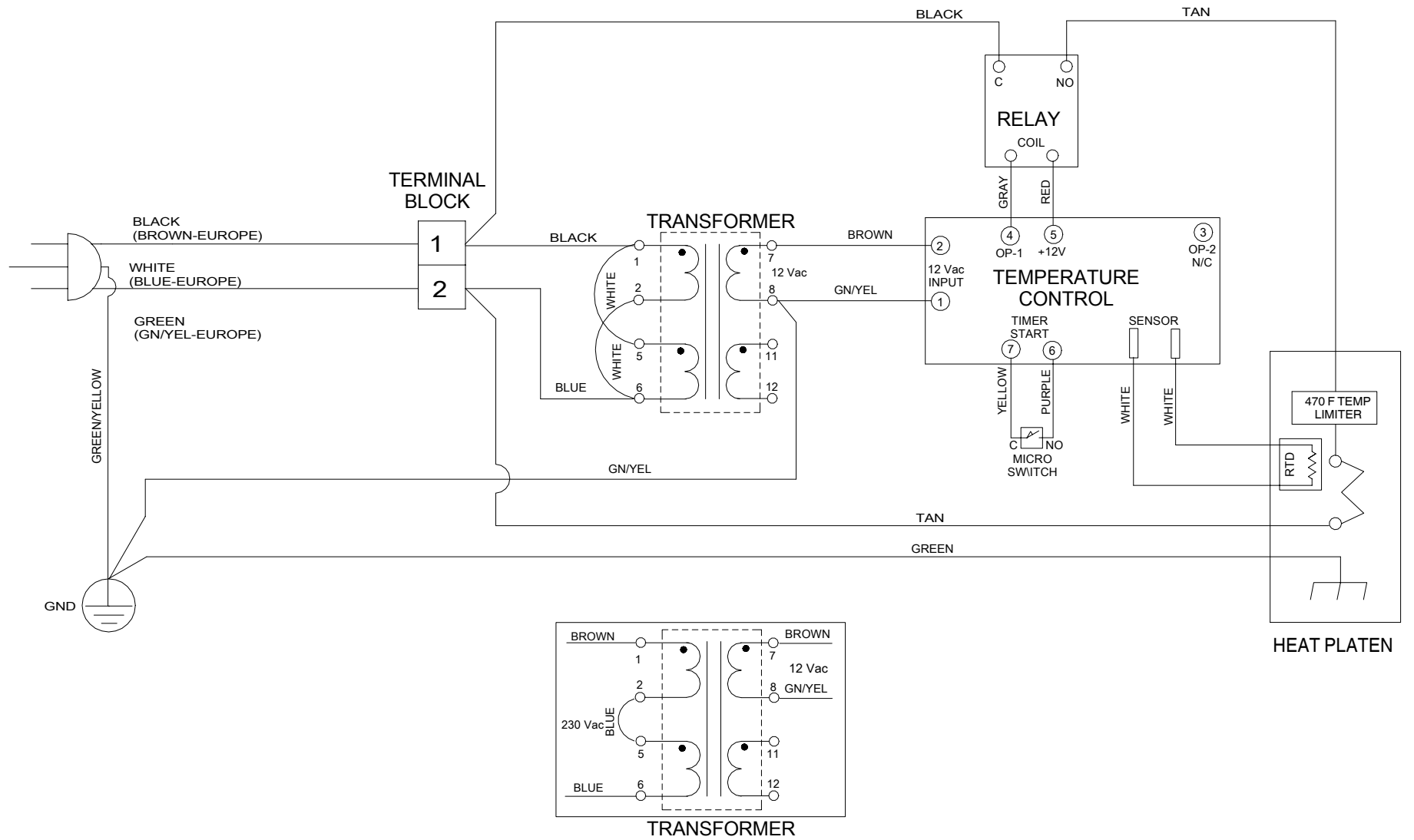
3. Be sure that the surface of the silicone platen is clean. Use a **mild** solvent such as **mineral spirits**.

4. The pad and metal must be thoroughly dry and clean, before starting the bonding operation.

5. Apply adhesive sealant to the metal platen. Spread a thin even coat and apply pad immediately. Apply pressure and position pad making sure that there is no air entrapment.

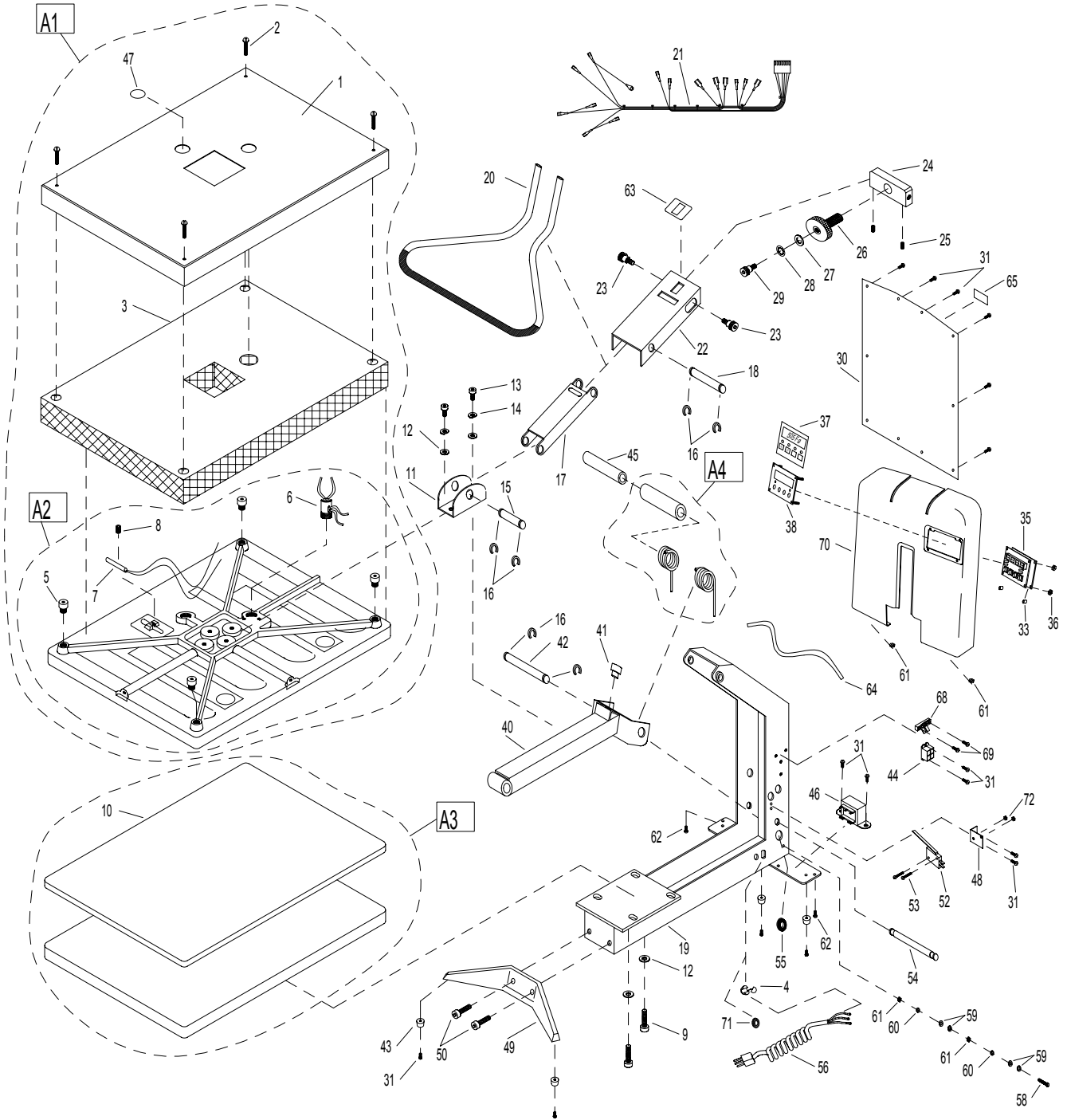
**NOTE:** *A serrated blade such as used for laying down rubber floor tiles would be helpful.*

6. Allow to cure overnight under low pressure at normal room temperature.





# MODEL 128



		<b>MODEL</b>	<b>MODEL</b>
		<b>128</b>	<b>128</b>
<b>NO</b>	<b>PART NAME</b>	<b>120V AC</b>	<b>230V AC</b>
1	SHROUD, HEAT	MPS90000	MPS90000
2	SCREW, PAN HD #10x1.0 LG PHIL SH METAL	MPSS143	MPSS143
3	INSULATION, FIBERGLASS	MPSP254	MPSP254
4	STRAIN, RELIEF CABLE	MPS90014	MPS90014
5	INSULATORS, SPACER (4/SET)	MPSI089	MPSI089
6	POST, GUIDE	MPP90000	MPP90000
7	SENSOR, TEMPERATURE	MPS90015	MPS90015
8	SCREW, SET 3/8-16 x .50 LG.	MPS90023	MPS90023
9	SCREW, SOCKET HD 5/16-18UNC x .750 LG.	MHSSH5161834	MHSSH5161834
10	PAD, SILICONE RUBBER	MPPP031	MPPP031
11	BRACKET, CLEVIS	MPB90001	MPB90001
12	WASHER, 5/16 I.D. PRESSURE ADJ.	MHWSAE516	MHWSAE516
13	SCREW, BOLT HEX HD .312-18x 1.00 LG. S.S.	MPS90016	MPS90016
14	WASHER, LOCK 5/16" I.D.	MPW90003	MPW90003
15	PIN, BOTTOM PRESSURE	MPP90003	MPP90003
16	CLIPS, "E"	MPSC240	MPSC240
17	LINK, LOWER	MPL90000	MPL90000
18	PIN, HANDLE PRESSURE	MPP90001	MPP90001
19	ASSY, BASE FRAME	MBAF90000	MBAF90000
20	HANDLE, PRESSURE	MPH90000	MPH90000
21	WIRE, HARNESS	MPW90011	MPW90011
22	ASSY, CHANNEL HANDLE	MBAC90000	MBAC90000
23	SCREW, SHOULDER BOLT .500-13 x.750 LG.	MPS90007	MPS90007
24	BLOCK, PIVOT PRESSURE	MPB90002	MPB90002
25	SCREW, SET 8-32UNC x .312 LG.	MPS90012	MPS90012
26	ASSY, WHEEL ADJUSTING	MBAW90000	MBAW90000
27	WASHER, SHIM 1/2" I.D. x .031 THK	MPW90001	MPW90001
28	WASHER, WAVE 1/2" I.D. x .015 THK	MPW90002	MPW90002
29	SCREW, SHOULDER BOLT .500-13 x .50 LG	MPS90005	MPS90005
30	COVER, REAR	MPC90008	MPC90008
31	SCREW, PAN HD 8-32 x .375 LG. PHILLIPS	MHSP83238	MHSP83238
33	SPACER, NYLON	MPS90010	MPS90010
35	CONTROLLER, DIGITAL	MPC90003	MPC90003
36	NUT, HEX 6-32, DIGITAL CONTROL	MPN90000	MPN90000
37	LABEL, CONTROL OVERLAY	MPL90005	MPL90005
38	PLATE, CONTROL	MPP90011	MPP90011
40	ASSY, PIVOT HANDLE	MBAP90000	MBAP90000
41	BUMPER, PIVOT HANDLE	MPB90004	MPB90004
42	PIN, ARM PIVOT	MPP90002	MPP90002
43	FEET, RUBBER (5/SET)	MPF90000	MPF90000
44	RELAY	MPR90001	MPR90001
45	TUBE, PIVOT	MPT90003	MPT90003
46	TRANSFORMER (USA MODEL)	MPT90001	MPT90001
46A	TRANSFORMER (EUROPEAN/BITRAIN)	N/A	MPPT700
47	PLUG, BUTTON SHROUD	MPP90006	MPP90006
48	BRACKET, MICROSWITCH	MPB90000	MPB90000
49	LEG, FRONT	MMC90001	MMC90001

		<b>MODEL</b>	<b>MODEL</b>
		<b>128</b>	<b>128</b>
<b>NO</b>	<b>PART NAME</b>	<b>120V AC</b>	<b>230V AC</b>
50	SCREW, SOCKET HD .375-16UNC x 1.50 LG	MPS90011	MPS90011
52	SWITCH, MICRO	MPS90018	MPS90018
53	SCREW, PAN HD 4-40UNC x .50 LG.	MPS90013	MPS90013
54	PIN, SPRING RETAINER	MPP90007	MPP90007
55	GROMMET, RUBBER	MPG90000	MPG90000
56	POWER CORD (USA MODEL)	MPPW141	MPPW142
56A	POWER CORD (EUROPEAN MODEL)	N/A	MPPW202
56B	POWER CORD (GREAT BRITAIN)	N/A	MPPW203
58	SCREW, PAN HD 8-32UNC x 1.00 LG	MPS90017	MPS90017
59	WASHER, FLAT #8 (.164 I.D.)	MPW90006	MPW90006
60	WASHER, #8 INTERNAL LOCK	MPW90007	MPW90007
61	NUT, HEX 8-32	MPN90002	MPN90002
62	SCREW, PAN HD 8-32UNC x .50 LG.	MPS90019	MPS90019
63	OVERLAY, PRESSURE ADJUSTMENT	MPL90004	MPL90004
64	SLEEVING, SILICONE COATED	MPS90020	MPS90020
65	DISCONNECT POWER LABEL	MPPL001	MPPL001
68	TERMINAL BLOCK	MPB90006	MPB90006
69	SCREW, PAN HD 8-32UNC x .50 LG.	MPS90019	MPS90019
70	COVER, FRONT (ONE PIECE)	MPC90007	MPC90007
71	GROMMET, RUBBER, 5/8x3/8x3/16	MPG90001	MPG90001
72	NUT, HEX 4-40	MPN90003	MPN90003
A1	ASSY, UPPER PLATEN	MBAP90001	MBAP90002
A2	ASSY, UPPER PLATEN (WIRING ONLY)	MBAP90003	MBAP90004
A3	ASSY, LOWER PLATEN	MBAP90005	MBAP90005
A4	ASSY, SPRING COUNTERBALANCE	MBAS90000	MBAS90000

# **INSTA GRAPHIC SYSTEMS<sup>®</sup>**

13925 E. 166th Street • Cerritos CA USA 90702-7900

Service: (800) 426-3609 • (562) 861-2566 • Sales: (800) 421-6971 (562) 404-3000 • Fax: (562) 404-3010 • <http://www.instagramh.com>